

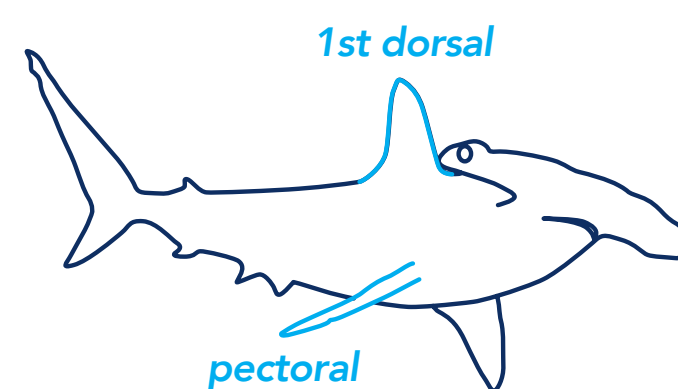
# Identifying Shark Fins: Implementing and Enforcing CITES

THESE SPECIES ARE LISTED ON APPENDIX II OF CITES: PART 1



**QUICK REFERENCE**  
SEE ID GUIDE FOR FULL DETAILS

**D/P** EASILY IDENTIFIED BY **FIRST DORSAL OR PECTORAL FINS**



## Oceanic whitetip

**D/P**

*Carcharhinus longimanus*



### 1<sup>ST</sup> DORSAL FIN

- Large and broadly rounded.
- Mottled white patch at apex.



Dorsal view (top)



Ventral view (underneath)

### PECTORAL FINS

- Long, with white mottled color at the broadly rounded apex on the dorsal surface.
- Ventral surface is typically white but can have mottled brown coloration.

## Porbeagle

**D/P**

*Lamna nasus*



### 1<sup>ST</sup> DORSAL FIN

- Dark blue/black to dark greyish brown.
- Rounded apex with white free rear tip.



Dorsal view (top)



Ventral view (underneath)

### PECTORAL FINS

- Broad, narrowly rounded at the apex.
- Dorsal surface is dark in color with a white margin along the free rear tip.
- Ventral surface is white or light, with a dusky coloration along midsection and margins of the fin.

## Hammerheads

**D/P**

**Scalloped & Smooth Hammerhead**  
*Sphyrna lewini* & *Sphyrna zygaena*



### 1<sup>ST</sup> DORSAL FIN

- Fin is tall, with a moderately curved trailing edge.
- Fin is brown or light in color.

Scalloped hammerhead



Dorsal view (top)



Ventral view (underneath)

Smooth hammerhead



Dorsal view (top)



Ventral view (underneath)

### PECTORAL FINS

- Short and broad.
- Dorsal surface is uniform, light brown or light greyish-brown in color.
- Ventral surface has black tips visible at the apex (scalloped hammerhead) whereas the ventral surface has faint to no markings (smooth hammerhead).

**Great Hammerhead**  
*Sphyrna mokarran*



### 1<sup>ST</sup> DORSAL FIN

- Tall, slender from leading edge to trailing edge.
- Elongated and pointed at apex.



Dorsal view (top)



Ventral view (underneath)

### PECTORAL FINS

- Pointed apex, moderately curved along trailing edge with dusky color at apex on ventral side and often along trailing edge.

For more information and detailed descriptions, visit:  
[www.identifyingsharkfins.org](http://www.identifyingsharkfins.org) and [www.blueresources.org/id-guides](http://www.blueresources.org/id-guides).



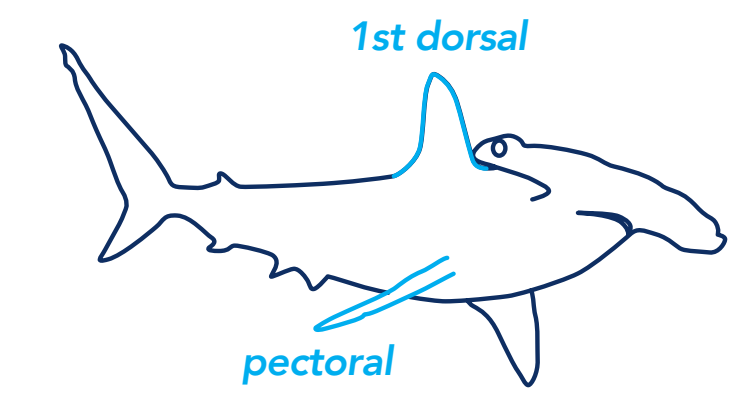
# Identifying Shark Fins: Implementing and Enforcing CITES

THESE SPECIES ARE LISTED ON APPENDIX II OF CITES: PART 2



**QUICK REFERENCE**

SEE ID GUIDE FOR FULL DETAILS

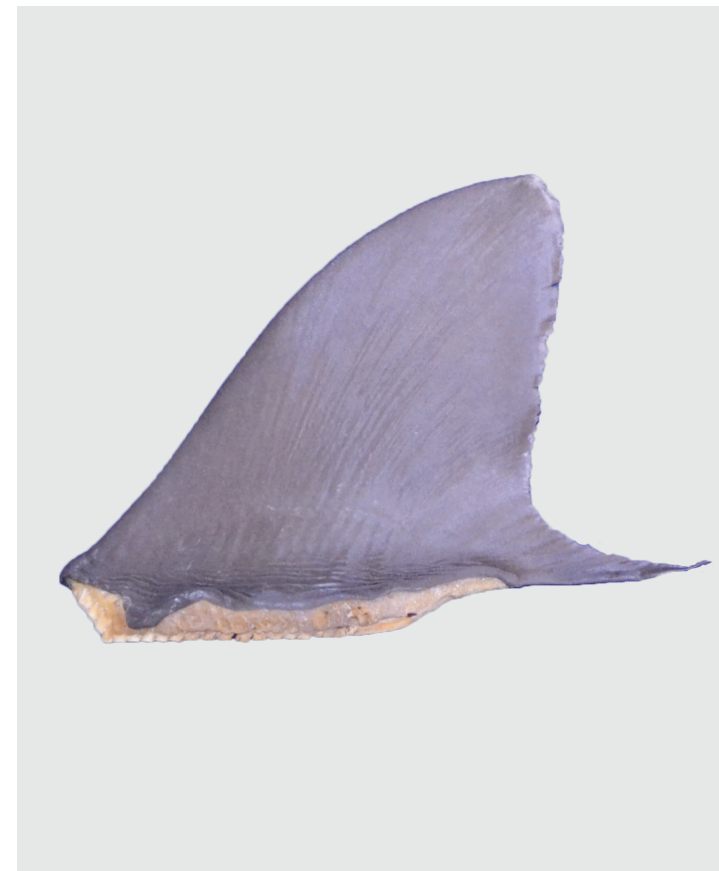


**D/P** EASILY IDENTIFIED BY **FIRST DORSAL OR PECTORAL FINS** **P** EASILY IDENTIFIED BY **PECTORAL FINS**

## Silky

**D/P**

*Carcharhinus falciformis*



### 1<sup>ST</sup> DORSAL FIN

- Uniform grey to greyish-brown in color.
- Sloping leading edge, moderately rounded apex, and strongly convex trailing edge.
- Free rear tip is close to half the length of the base.



Dorsal view (top)



Ventral view (underneath)

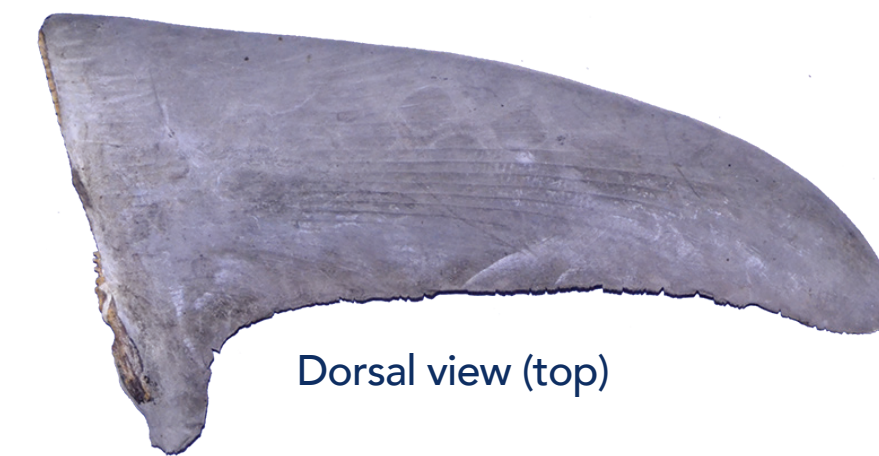
### PECTORAL FINS

- Long, nearly straight trailing edge and narrowly rounded apex.
- Dorsal surface is grey to greyish-brown.
- Ventral surface is white with dusky coloration concentrated at the apex and extends less than 1/3 of the trailing edge.

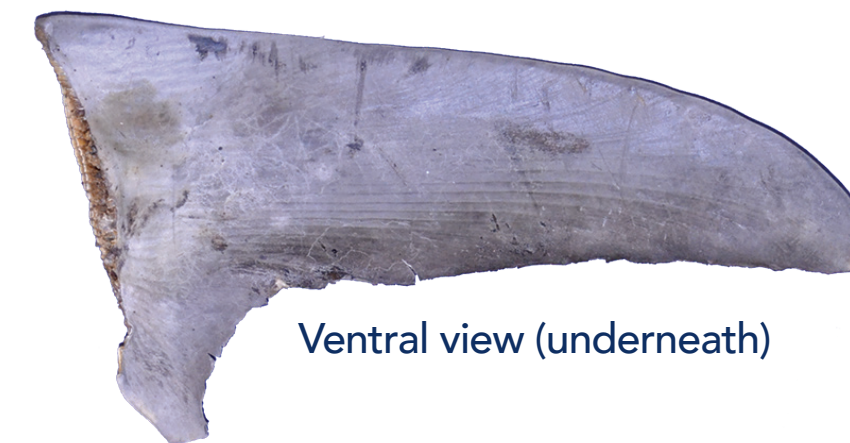
## Threshers

**P**

**Common Thresher | *Alopias vulpinus***



Dorsal view (top)



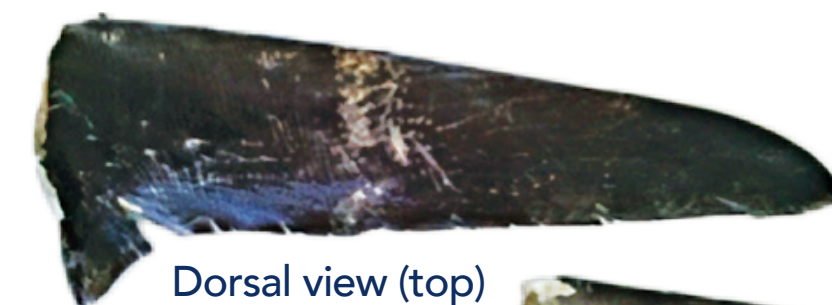
Ventral view (underneath)

### PECTORAL FINS

- Long, slender, curving slightly at the rounded apex.
- Dorsal surface is dark grey to dark greyish-brown.
- Ventral surface almost as dark as the dorsal surface, with white mottled color at the base.
- Often a small white spot at the tip of the apex (visible on dorsal and ventral surfaces).

**Bigeye & Pelagic Thresher | *Alopias superciliosus* & *Alopias pelagicus***

**Bigeye thresher**



Dorsal view (top)



Ventral view (underneath)

**Pelagic thresher**



Dorsal view (top)



Ventral view (underneath)

### PECTORAL FINS

- Long, slender, curving slightly at the rounded apex.
- Dorsal surface is dark grey to dark greyish-brown.
- Ventral surface almost as dark as the dorsal surface, with light color at the base and extending into middle of the fin (margins are dark).

### FIRST DORSAL FINS FOR ALL THREE THRESHERS



Common thresher



Bigeye thresher



Pelagic thresher

### 1<sup>ST</sup> DORSAL FIN

- Broad and erect with steep angled leading edge, slightly convex trailing edge and short free rear tip.
- Very thick across the base.

**Note:** It is not possible to identify thresher first dorsal fins using the associated guide.

For more information and detailed descriptions, visit: [www.identifyingsharkfins.org](http://www.identifyingsharkfins.org) and [www.blueresources.org/id-guides](http://www.blueresources.org/id-guides).

